

Aerodynamic Analysis on Noise from Automotive Side Mirror Using CFD

Nik Muhammad Jafni Jamaludin¹, Azwan Sapit^{1*}, Muhammad Ammar Baharuddin², Misato Nakagiri³

¹Centre for Energy and Industrial Environment Studies (CEIES), University Tun Hussein Onn Malaysia, Parit Raja, 86400, Malaysia.

²Jabil Circuit Sdn. Bhd. 56, Hilir Sungai Keluang 1, Bayan Lepas Industrial Park Phase 4, Penang 11900, Malaysia.

³The University of Tokushima, 2-24, Shinkura-cho, Tokushima 770-8501, Japan.

Email: azwans@uthm.edu.my

Abstract: The geometry of the car side mirror influences the aerodynamic noise. This research investigates aerodynamic analysis on noise from the side mirror using Computational fluid dynamic CFD. In study will design side mirror 2 type of design Honda Civic EG9 category sedan and Range Rover Evoque category SUV. Additionally, one of the goals of this study is to evaluate the model's CFD simulation the design built using the SolidWorks software, and the simulation run using the ANSYS software. The methodology research was by simulating the side mirror models with three velocity values (80 km/h, 100 km/h, 120 km/h). The analysis of the side mirror's drag force, acoustic contour, and velocity streamlines will determine the results that must be compared. Design 1, a sedan, produces a maximum acoustic power level of 77.21 dB when travelling at a high speed of 120 km/h. The maximum acoustic power level for Design 2 SUV cars travelling at 120 km/h is 75.71 dB. In summary, design 2's side mirror has a higher acoustic power level than design 1's side mirror. The force that opposes the motion of a body that is filled with fluid. Design 1, a sedan, produces a drag force of 4.52 N at a high speed of 120 km/h. Design 2, an SUV, results in a drag force of 6.36 N at a high speed of 120 km/h. Lastly, this research benefits car manufacturing companies by changing design side mirror the can decrease cabin noise. This will improve ride quality, especially since electric vehicles dominate the market with no engine noise.

Received 18 February
2023; Accepted 10 May
2023; Available online 22
June 2023

Keywords: Acoustic, Side Mirror, Aerodynamic Noise, computational fluid dynamics CFD

Copyright © 2023 MBOT Publishing.
All right reserved.

*Corresponding Author:

Azwan Sapit,
Centre for Energy and Industrial Environment Studies (CEIES),
University Tun Hussein Onn Malaysia,
Parit Raja, 86400, MALAYSIA.
Email: azwans@uthm.edu.my

1. Introduction

Aerodynamically generated noise is generally the dominant noise inside a modern passenger car travelling at relatively high speed (> 100 km/h). Thus, the sensitivity of wind noise to flow velocity, which is related to the vehicle velocity through the air. However, at highway speeds wind noise is significant and is the focus of much attention by car companies [1]. Flow separation can cause strong pressure fluctuations, which generate aerodynamic noises and also impinge upon the side structures, causing them to vibrate and to radiate

noise [2,3]. Other research also demonstrated that whistle noise is attributed to the considerable change in the A-pillar vortex and increase in turbulent intensity [4,5].

To reduce the aerodynamic noise, the protruding mirror's design must be altered. There have been certain common methods used to reduce the side mirror's long-standing issues with noise and mirror surface vibration. Previous research have recommended aerodynamic optimization methods to reduce the strength of the intrinsic shedding vortex and suppress the generation of aerodynamic noise by changing the geometric shape of

the mirror, such as its bracket height, the housing height and size, the bezel shape, the elimination of sharp edges on all of the corners, and the tube-type extension of the mirror housing [6,7]. Because it also satisfies with the size restriction to ensure its visual angle, there are limitations on how much the geometry of the side mirror can be reduced for aerodynamic noise.

For vehicle designers, computational fluid dynamics (CFD) has proven to be a powerful resource. Tasks in CFD range from classical aerodynamics, like the computation of drag or lift forces, to interdisciplinary fields, like wind noise prediction. The goal is to simulate noise analysis and determine whether the vehicle's aerodynamics are affected by the basic geometry of the side mirror [9].

The Broadband noise source model for acoustics makes it possible to identify the noise source across a wide frequency range in a steady state flow. Transient analysis, which consumes a significant amount of time and computing power to calculate the noise source and propagation, is not necessary for the broadband noise source model, in contrast to the direct method and integral method. The acoustic power is calculated in form decibel from formula.

$$\text{Sound Power Level} = 10 \log_{10} \left(\frac{W}{W_{\text{REF}}} \right) \quad (1)$$

Where:

W = Acoustic Power associated with a sound source
 W_{REF} = References power level ($W_{\text{REF}} = 10^{-12}$ W or 1 pW)

2.0 Methodology

In this research, the approach, simulation, setting, strategy, and mathematical formula are mentioned. ANSYS FLUENT software is used in this research to collect data and to perform the computational fluid analysis about this research. The boundaries and limitations of the research study are very important to achieve the objective of the research and to obtain the best result of the research. The result of the study refers to the past research to be as a guide to complete this research.

In order to conduct the experiment, the geometry design used in this paper is a side mirror which having different parameters. Then, Ansys Fluent is used to start the simulation by setting up the parameter. Before proceeding to the next step, meshing sizes are set with the suitable size to make sure the result data obtained are acceptable. Then, the simulation is initialized and run to do a calculation. After that, the result is obtained, acoustic contour and the airflow pattern can be seen using the software.

2.1 Model design

In this project, there are 2 type of side mirror that need to compare for the test and analysis in Figure 1 shows design 1 model reference Honda Civic EG9 category sedan car. as for figure 2 shows design 2 model reference Range Rover Evoque category SUV car. The

side mirror is modelled accurately with actual dimensions. The models of side mirror are designed using the advantage modeling techniques in SolidWorks software [8].

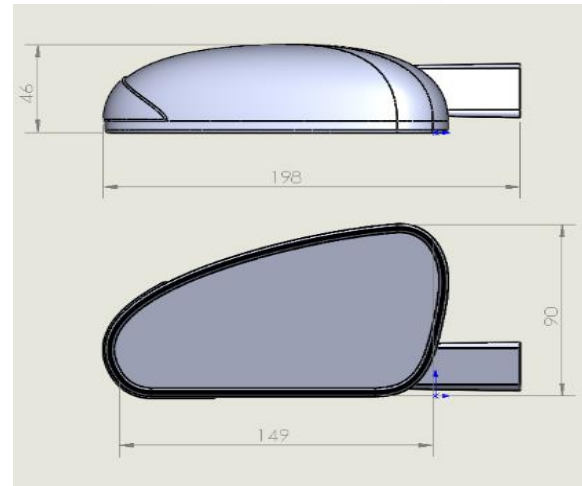
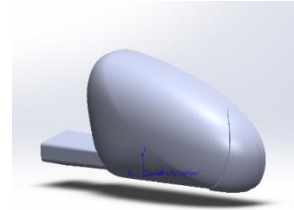


Figure 1: Design 1 Side Mirror Overall Dimension

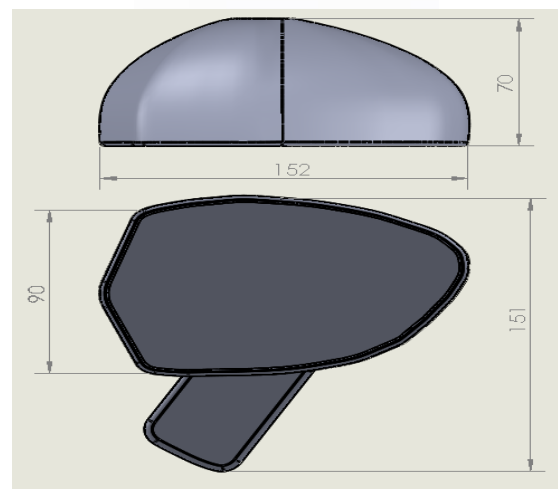
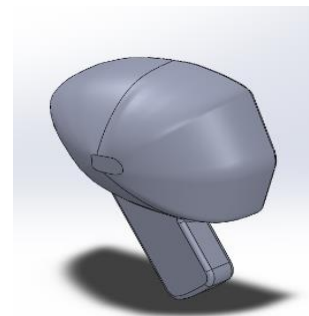


Figure 2: Design 2 Side Mirror Overall Dimension

2.2 Geometry Model

An enclosed computational domain was made in the current optimization study to simulate how the air flow was distributed over the mirror. The air flow simulation process is performed into the computational domain in figure 3. The width of the computational volume is 0.6 m, height is 0.6 m, and the length is 1.0 m. The air flow on the stationary mirror model is simulated in this optimization analysis along with the fluid flow. The mirror model is positioned in a computational domain 0.5 m away from the air inlet in order to improve the visualization of the streamline flow.

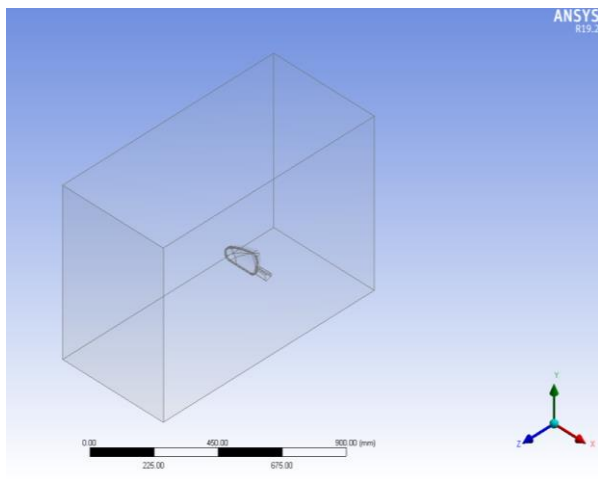


Figure 3: Enclosed computational domain

2.3 Meshing

The meshing used with water geometry workflow the Watertight Geometry workflow simplifies the mesh generation process, allowing all users to complete all stages of a CFD simulation, from meshing to post-processing, entirely within the same software session, in a single window user environment. A Polyhedral mesh was chosen as the model. Plus, during the process of meshing, the position of inlet, outlet the wall of the model also must be determined. Figure 4 shows the model been applied mesh before running the simulation and detail of this meshing. To get a high-quality mesh, mesh matrices must be addressed in order to eliminate numerical diffusion in Ansys Fluent. The incorrect answer is because the mesh itself is of low quality. Table 1 shows below the solution's skewness and orthogonal quality for two designs. From result is may be considered good for skewness mesh and acceptable for orthogonal mesh.

Table 1: Result Skewness and Orthogonal

Design	Number of nodes	Skewness mesh metric	Orthogonal mesh-metric
1	2555677	0.79	0.20
2	2454393	0.80	0.15

2.4 Setup

To test 3 various inlet velocities 22.22, 27.79, 33.33, m/s (80, 100, 120 Km/h respectively). To find Drag force for each velocity and maximum and minimum sound generated on side mirror. The SST K – Omega model is used in this simulation because the model is best suited for near the wall flow region compared to K epsilon that suited for flow away from wall also a broadband noise source model was applied for acoustic analysis in decibels Table 2 shows detail parameter chosen.

Table 2: Detail Parameter Chosen

Parameter	Description
Velocity inlet, v	22.22 m/s, 27.78 m/s, 33.33 m/s
General	
Type	Pressure- Based
Velocity Formulation	Absolute
Time	Steady
Mesh	Polyhedral
Model	
Viscous	SST K-Omega
Acoustics	Broadband Noise Sources
Material	
Fluid	
Density of air,	1.225 kg/m ³
Methods	
Scheme	simple
Gradient	Least Squares Cell Based
Pressure	Second Order
Momentum	Second Order Upwind
Turbulent Kinetic Energy	Second Order Upwind
Specific Dissipation Rate	Second Order Upwind
Monitors	
Boundary walls	No slip condition
Time step	0.001
Iterations	1000
Initialization	
Methods	Standard
Turbulent Kinetic Energy	1.851482 m ² /s ²
Specific Dissipation Rate	12675 1/s

3.0 Results and Discussion

Validation is an important method for minimizing and measuring modelling errors and to ensure that the CFD model under consideration is a good representation of reality. Therefore, for this study, the past study was used as a guideline to validate this analysis is on the right path. As stated by the previous researcher that been study by, (Zaareer & Mourad, 2022)

“Effect of Vehicle Side Mirror Base Position on Aerodynamic Forces and Acoustics” [10]. This study of the noise from side mirror been compared to the standard mirror, aerodynamic forces generated, and acoustics generated. This study also shares the same results as the new design side mirror gave lower acoustic power level compared to existing model side mirror.

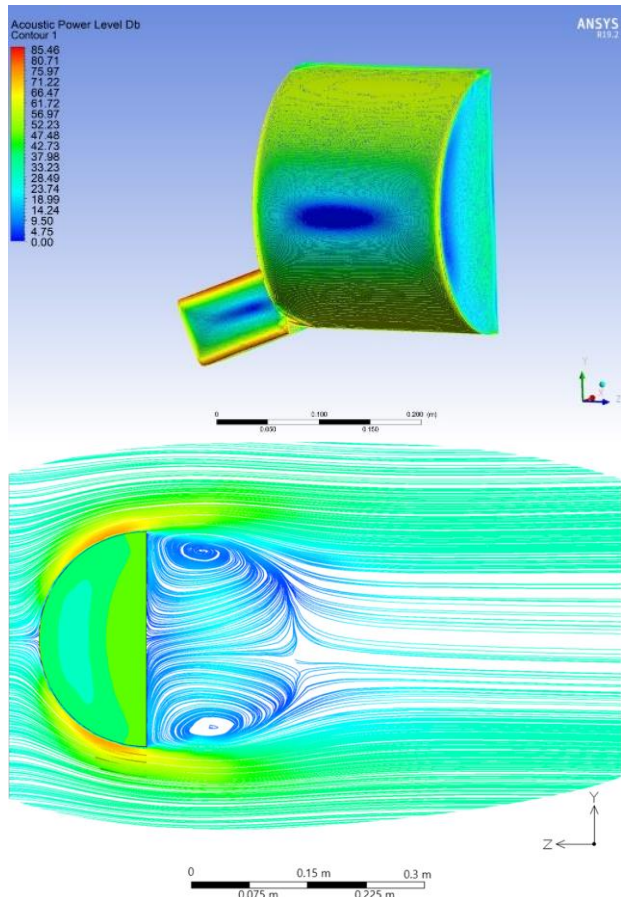


Figure 4: Acoustic Power Level Contour Actual Model & Velocity Streamlines

Based on figures 4,5, and 6 show CFD analysis result of the power level contour the high noise generates at the edges surface base holder part for each design this show when air flow on side mirrors the highest noise produce is at the base holder side mirror. From the velocity inlet which the fluid streamlines can be observed the streamline velocity drops abruptly on the back side of the mirror, causing a swirl. Due to the shape of the figure 4 actual modal and figure 5 design 1 has much more curvature housing compared figure 6 design 2 have vortex shape housing which is the stagnation points of the fluid are difference that led to the changes of velocity streamline pattern.

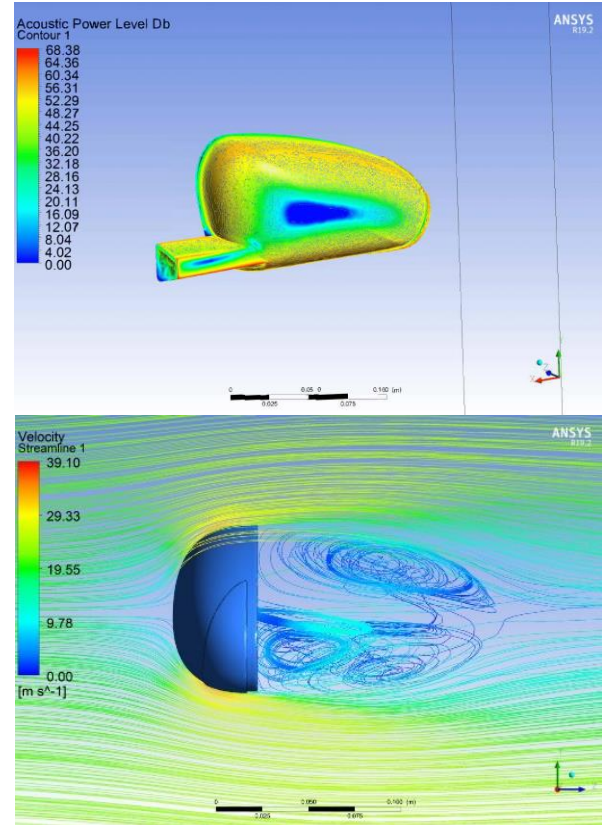


Figure 5: Acoustic Power Level Contour & Velocity Streamlines Design 1

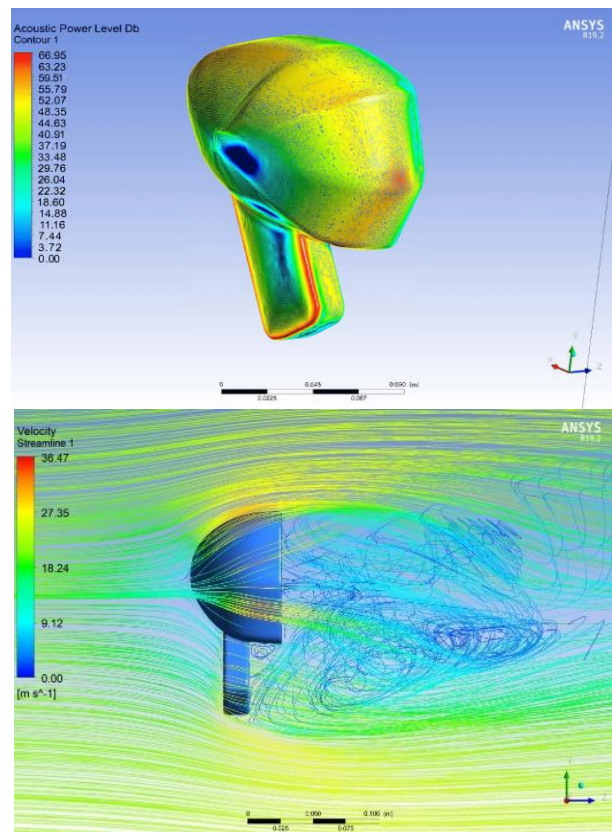


Figure 6: Acoustic Power Level Contour & Velocity Streamlines Design 2

Table 3 shows the difference in maximum acoustic power level model by different velocity. Design side mirror 1 shows a middle position between the actual model being highest and design 2 being the lowest and it show for every velocity. From the results, actual model show increasing from 80 km/h to 100 km/h by 8.78% and from 100 km/h to 120 km/h increasing by 6.64%. Design 1 also shows increasing from 80 km/h to 100 km/h by 7.62% and from 100 km/h to 120 km/h increasing by 4.52%. This case same goes design 2 the percentage increasing from 80km/h to 100km/h by 7.55% and from 100 km/h to 120 km/h increasing by 4.74%. It is seen that the air flow velocity increases gradually with increase acoustic power level. difference in minimum acoustic power level model by different velocity.

Table 3: The value of Acoustic Power Level for Overall Design

Design	Velocity(m/s)	Velocity(km/h)	Maximum Acoustic Power Level (dB)	Minimum Acoustic Power Level (dB)
Actual model	22.22	80	70.17	0
	27.78	100	76.62	2.34
	33.33	120	81.88	7.86
1	22.22	80	68.38	0
	27.78	100	73.80	2.27
	33.33	120	77.21	7.59
2	22.22	80	66.95	0
	27.78	100	72.20	2.15
	33.33	120	75.71	7.38

Design side mirror 1 shows a middle position between the actual model being highest and design 2 being the lowest and it show for every velocity. from the result, at 80 km/h the value of acoustic power level 0 dB for overall design because of the input air flow velocity in the study starts with 80km/h.at 100 km/h the difference minimum acoustic power level actual design model between design 1 is 3.03% and design model between design 2 is 3.50%. at 120 km/h show actual design model between design 1 is 8.46% and design model between design 2 is 6.30%. The highest acoustic power level means more noise generate as for lowest acoustic power level less noise generate.

Table 4 displays the result of drag actual model, design 1 and design 2 side mirror. From observation the value drag force increases gradually with air flow velocity. actual models show a middle position between design 2 being highest and the design 1 being the lowest and it show for every velocity. from the result, actual

model show increasing from 80km/h to 100km/h by 39.35% and from 100km/h to 120km/h increasing by 32.32%. Design 1 also show increasing from 80km/h to 100km/h by 42.44% and from 100km/h to 120km/h increasing by 35.11%. This case same goes design 2 the percentage increasing from 80km/h to 100km/h by 41.42% and from 100km/h to 120km/h increasing by 35.77%. it seen that the air flow velocity increase gradually with increase drag force. However, design 2 being the highest drag force course by shape design side mirror housing more width and larger compared to other.

Table 4: The value of Drag force for Overall Design

Design	Velocity(m/s)	Velocity(km/h)	Drag Force (N)
Actual model	22.22	80	2.49
	27.78	100	3.71
	33.33	120	5.14
1	22.22	80	2.06
	27.78	100	3.17
	33.33	120	4.52
2	22.22	80	2.91
	27.78	100	4.43
	33.33	120	6.36

Conclusion

The study focuses on CFD-based aerodynamic analysis of side mirror noise. The two types of side mirror, a Honda Civic EG9 category sedan and a Range Rover Evoque category SUV, have been compared in terms of noise using the two designs. Design 1, a sedan, produces a maximum acoustic power level of 77.21 dB when travelling at a high speed of 120 km/h. The maximum acoustic power level for Design 2 SUV cars travelling at 120 km/h is 75.71dB. In summary, design 2's side mirror has a higher acoustic power level than design 1's side mirror. The study also identifies drag force, which is the force that opposes the motion of a body that is filled with fluid. Design 1, a sedan, produces a drag force of 4.52 N at a high speed of 120 km/h. Design 2, an SUV, results in a drag force of 6.36 N at a high speed of 120 km/h. In summary, design 2's side mirror has a higher drag coefficient than design 1's side mirror. The model simulation was then examined using the Fluid flow mode of the ANSYS software. The results that can be produced by this simulation software include velocity streamlines, vector velocity, and acoustic power level, among many others. In conclusion, the sound power level can be used to predict the noise impact of a source in our new development before it is built without having to measure it. This includes sources like producing car side mirrors. If you are asked to provide noise data for something, the acoustician will always appreciate data that is provided as a sound power level.

Acknowledgement

The authors would like to thank the Ministry of Higher Education (MOHE) for supporting this research under the Fundamental Research Grant Scheme No. Vot K296 and Research Fund Universiti Tun Hussein Onn Malaysia (Q253).

References

- [1] Chauhan, B. V. S., Vedrtam, A., & Pratap, V. (2020). Designing Rear View Mirror of Car Using CFD and Reverse Engineering. *Journal of the Chinese Society of Mechanical Engineers, Transactions of the Chinese Institute of Engineers, Series C/Chung-Kuo Chi Hsueh Kung Ch'eng Hsuebo Pao*, 41(3), 373–380
- [2] Chu, Y. J., Shin, Y. S., & Lee, S. Y. (2018). Aerodynamic analysis and noise-reducing design of an outside rear view mirror. *Applied Sciences (Switzerland)*, 8(4). <https://doi.org/10.3390/app8040519>
- [3] Xu Wang, (2010). Vehicle noise and vibration refinement. Woodhead Publishing in Mechanical Engineering, page 219-221.
- [4] Lounsberry, T.H.E.; Gleason, M.E.; Puskarz, M.M. Laminar Flow Whistle on a Vehicle Side Mirror; SAE Paper, 2007-01-1549; Society of Automotive Engineers: Warrendale, PA, USA, 2007.
- [5] Watkins, S.; Oswald, G. The flow field of automobile add-ons-with particular reference to the vibration of external mirrors. *J. Wind Eng. Ind. Aerodyn.* 1999, 82, 541–554.
- [6] Jaitlee, R., Alam, F., and Watkins, S., "Pressure Fluctuations on Automotive Rear View Mirrors," SAE Technical Paper 2007-01-0899, 2007
- [7] Murad, N.; Nase, J.; Alam, F.; Watkins, S. Computational fluid dynamics study of vehicle A-pillar aero-acoustics. *Appl. Acoust.* 2013, 74, 882–896.
- [8] Bodea, S.M., Prodan, C.V., Scurtu, I.L.: The aerodynamic study of a body truck. In: *International Congress of Automotive and Transport Engineering*, pp. 73–79. Springer, Cham (2018)
- [9] Van Herpe, François Bordji (2011). Wavenumber-frequency analysis of the wall pressure fluctuations in the wake of a car side mirror.
- [10] Zaareer, M., & Mourad, A. H. (2022). Effect of Vehicle Side Mirror Base Position on Aerodynamic Forces and Acoustics. *Alexandria Engineering Journal*, 61(2), 1437–1448. <https://doi.org/10.1016/j.aej.2021.06.049>